



Paul Michael Graves

Tala Baddar

Nezar AbuHalaweh

Randa Mujahed



Localights

LIVE FEED

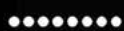
MAP

ABOUT

myLIGHTS



QR CODE



SMARTPHONE



CONNECT TO
INTERNET



WWW.LOCALIGHTS.COM

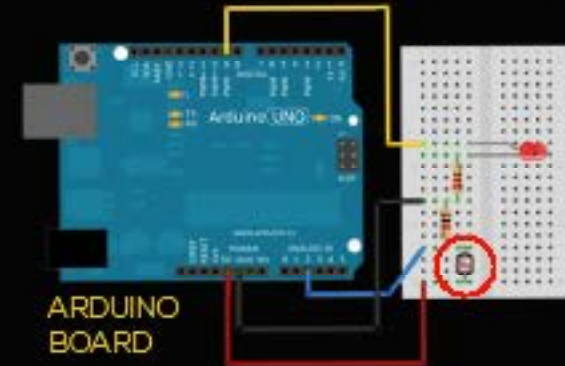
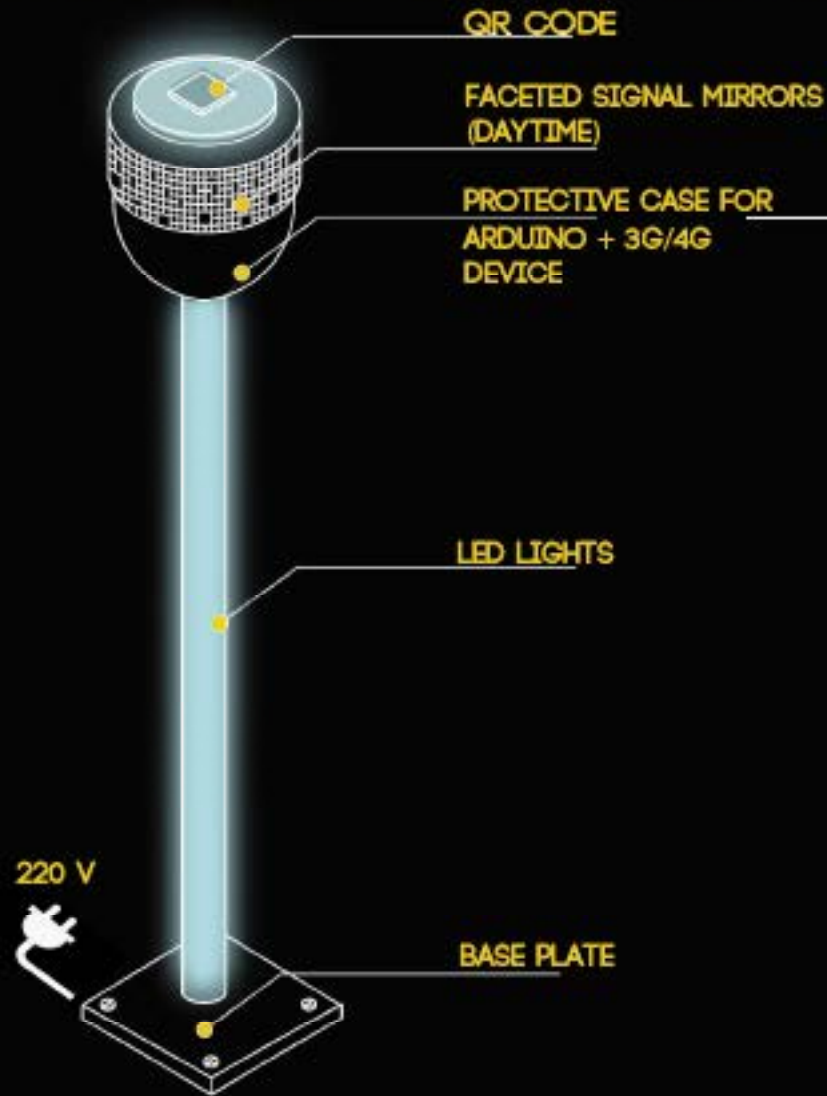


PRIVATE WIFI



TURN ON/OFF





LocalLights are high-tech devices installed at public space renovation projects throughout the city.

Passersby are attracted to the **LocalLights** by reflective mirrors in the day and glowing LEDs at night.

Smartphones are directed to the **LocalLights.com** mobile website.

Members participate in an active community of volunteers and fundraisers.

DISCOVER . CONNECT . EMPOWER



```

//
##Testing Environment for Xively Arduino Tutorial##
This program is designed to test the sensing circuit created
in the Xively Wi-Fi tutorial. It tests the photocell as well as the
LED output. This sketch can be adapted to take sensor readings from any analog sensor.
Derived from basicSensorTestEnv by Calum Barnes and AnalogInput by Tom Igoe

```

```

By Calum Barnes 3-4-2013
MIT License - (http://opensource.org/licenses/MIT)
Copyright (c) 2013 Calum Barnes
*/

```

```

////////////////////
////////SETUP////////
////////////////////
const int analogInPin = A2; // Analog input pin that sensors is attached to (DEFAULT=A2)
int readingDelay = 10; // Delay between each reading (DEFAULT=10)
int readingsPerSample = 10; // Number of readings per sample / loop (DEFAULT=10)
boolean singleRead = false; // Series of readings (False) or single reading (TRUE) (DEFAULT=FALSE)
boolean enableLED = true; // LED
const int ledPin = 5; // Pin that Anode of LED is attached to (DEFAULT=13)
////////////////////

```

```

//vars
int sensorValue = 0; // value read from the pot
int outputValue = 0;
int ledValue = 0;
int swal;
int sensorAvg;
int tenTot;

```

```

void setup() {
  // initialize serial communications at 19200 bps:
  Serial.begin(19200);

  pinMode(analogInPin, INPUT); //configure pin as input
  pinMode(ledPin, OUTPUT);
}

```

```

void loop() {
  if(singleRead){
    //SAMPLE OF 10 READINGS
    for (int i=0; i<readingsPerSample; i++){ //repeat number of times defined in setup
      swal = analogRead(analogInPin); //take single reading
      tenTot = tenTot + swal; //add up readings
      delay(readingDelay); //delay between readings as defined in setup. should be non 0
    }
    sensorAvg = (tenTot / 10); //divide the total
    tenTot = 0; //reset total variable
    outputValue = sensorAvg; //define smoothed, averaged reading
  }else{
    //STRAIGHT READINGS //only do this if singleRead=true
    sensorValue = analogRead(analogInPin);
    outputValue = sensorValue;
  }
}

```

```

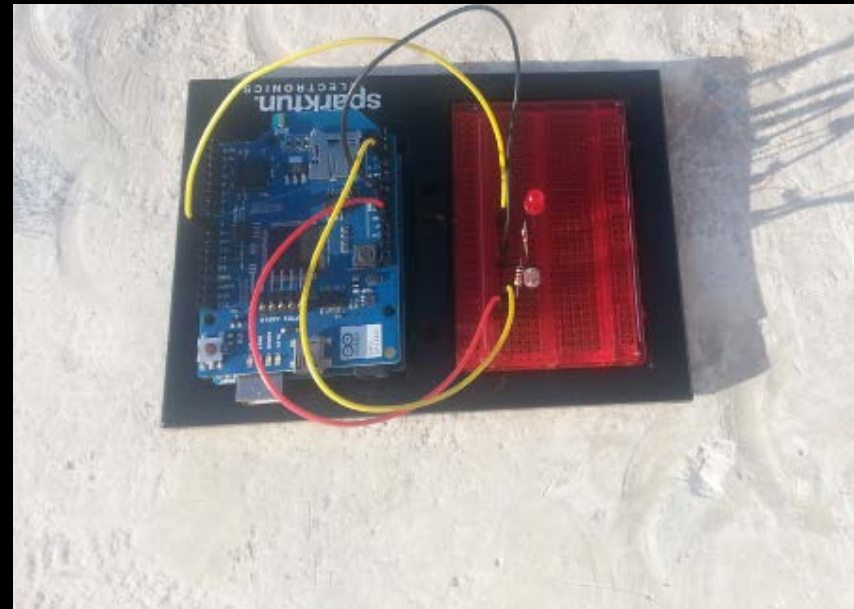
//print the data
Serial.print("Photocell= ");
Serial.println(outputValue); //print the final value to serial mon

```

```

//turn on LED to level of the light
ledValue = map(outputValue, 0, 1023, 255, 0); //changing output to single byte for pin
analogWrite(ledPin, ledValue); //turn on led to specified level

```





Localights

LIVE FEED

MAP

ABOUT

myLIGHTS





Amman, Jordan

31°56'36.69"N
35°55'33.62"E

[show on map](#)

Localight 119



4

Where is this place?

Amman @ 11:57

Omar23

[Invite](#)

[Reply](#)



6

This is great! Finally!

Amman @ 11:48

Mira1101

[Invite](#)

[Reply](#)



Localight 87 likes this!

Istanbul @ 9:47



2

Congrats! Awesome view!

Amman @ 11:45

Muhd1986

[Invite](#)

[Reply](#)



Localight 119 Established!

Amman @ 11:38

[Join](#)

[Reply](#)



Amman, Jordan

31°56'36.69"N
35°55'33.62"E

[show on map](#)

Localight 119



Azooz38

I can't friday, sorry :(

Amman @ 12:09

[Reply](#)

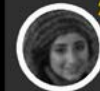


FarahS11

Friday sounds great! I'm bringing my friends!

Amman @ 12:03

[Reply](#)



Randa23

Do we need to get anything?

Amman @ 11:50

[Reply](#)



Fawaz7

What time? Friday morning maybe?

Amman @ 11:42

[Reply](#)



LL119
[Join](#)

Site Clean-up?

Amman @ 11:38

[Reply](#)



Where is this place?

Amman @ 11:57



Amman, Jordan

31°56'36.69"N
35°55'33.62"E

[show on map](#)

Localight 119



Nizar952



New hangout near the 4th circle!

Amman @ 12:24



Azooz38

That's great! Meetup tonight?

Amman @ 12:09

[Reply](#)



Jay2389

Quick q, how much did you pay for the benches?

Mumbai @ 8:09

[Reply](#)



LL119

Paved and bench-d!!

Amman @ 15:24

[Reply](#)



Amman, Jordan

31°56'36.69"N
35°55'33.62"E

[show on map](#)



87

Localight 119

Amman, Jordan

87 myLights

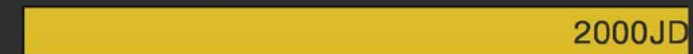
128 Likes



STATUS:

Fundraising Goal

2000JD



2000JD

Completion



100%



LocalLights

Discover.Connect.Empower